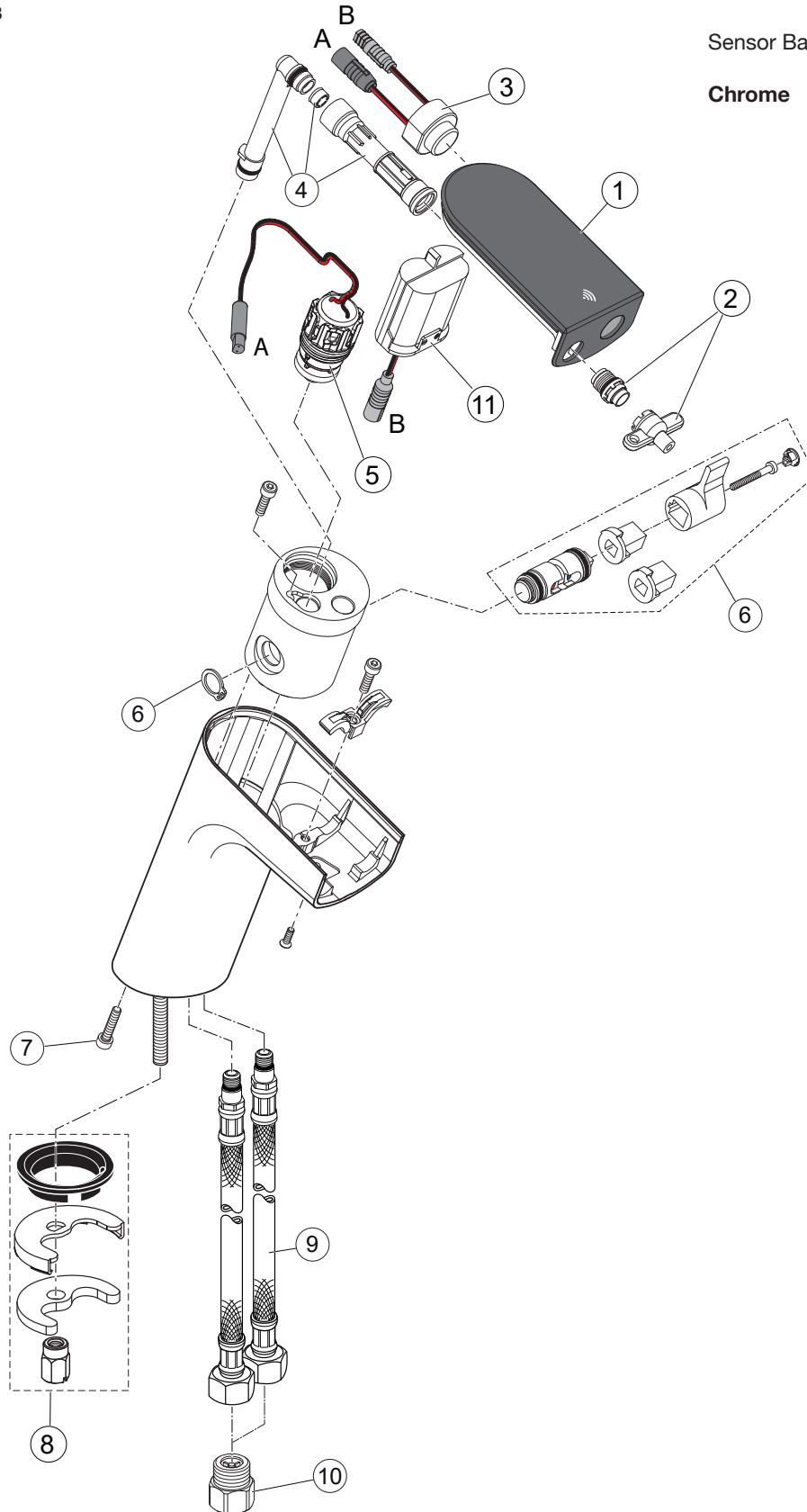


Produced from: May 2023

Sensor Basin Electronic  
**Chrome**      **A7857AA**



**Replace XX with the appropriate finish code**  
 Chrome = AA      Onyx Black = B3

**Example spare part order:**  
**A 861 681 AA** in Chrome

| Pos. | Description            | Part-Number         | Qty.  | Pos. | Description               | Part-Number          | Qty.  |
|------|------------------------|---------------------|-------|------|---------------------------|----------------------|-------|
| 1    | Acryl Cover cpl.       | <b>A 861 534 NU</b> | 1 Set | 8    | Fixation set              | <b>A 960 001 NU*</b> | 1 Set |
| 2    | Flowregulator with Key | <b>A 861 531 NU</b> | 1 Set | 9    | Flex. hose M10x1/450-G3/8 | <b>A 860 794 NU</b>  | 1 pcs |
| 3    | IR Sensor              | <b>A 861 702 NU</b> | 1 pcs | 10   | Check valve G 3/8 cpl.    | <b>B 960 844 NU</b>  | 2 Set |
| 4    | Connection pipe        | <b>A 861 680 NU</b> | 1 Set | 11   | Battery case              | <b>A 861 617 NU</b>  | 1 Set |
| 5    | Solenoidvalve 6V G1/2  | <b>F 961 050 NU</b> | 1 pcs |      | Battery 6V CR-P2          | <b>A 960 161 NU</b>  | 1 pcs |
| 6    | Pre-Mixer cpl.         | <b>A 861 681 XX</b> | 1 Set |      |                           |                      |       |
| 7    | Screw M4X20 Din 912    | <b>A 962 268 NU</b> | 4 pcs |      |                           |                      |       |

\* Universal-Set (not all parts needed)